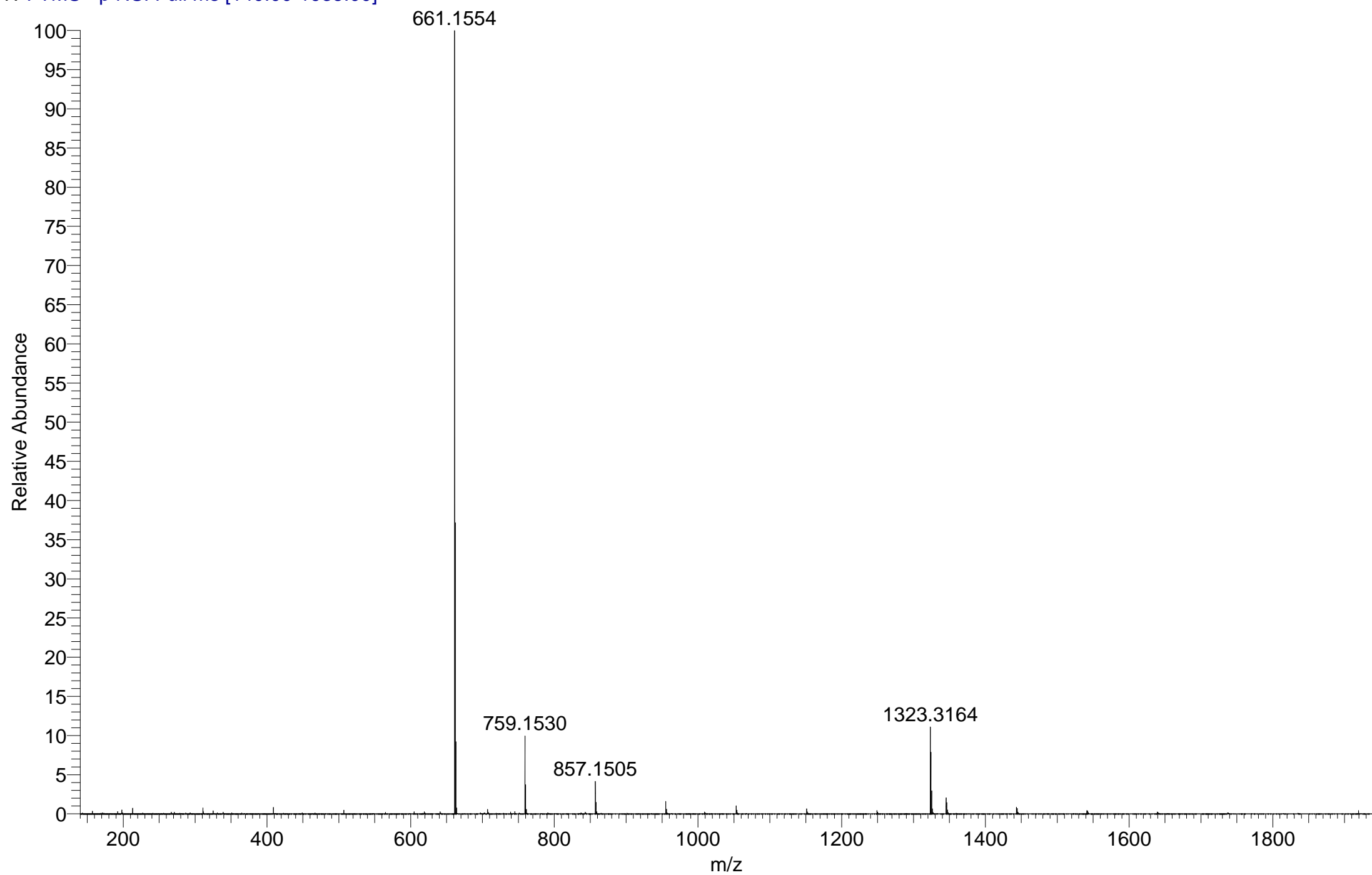
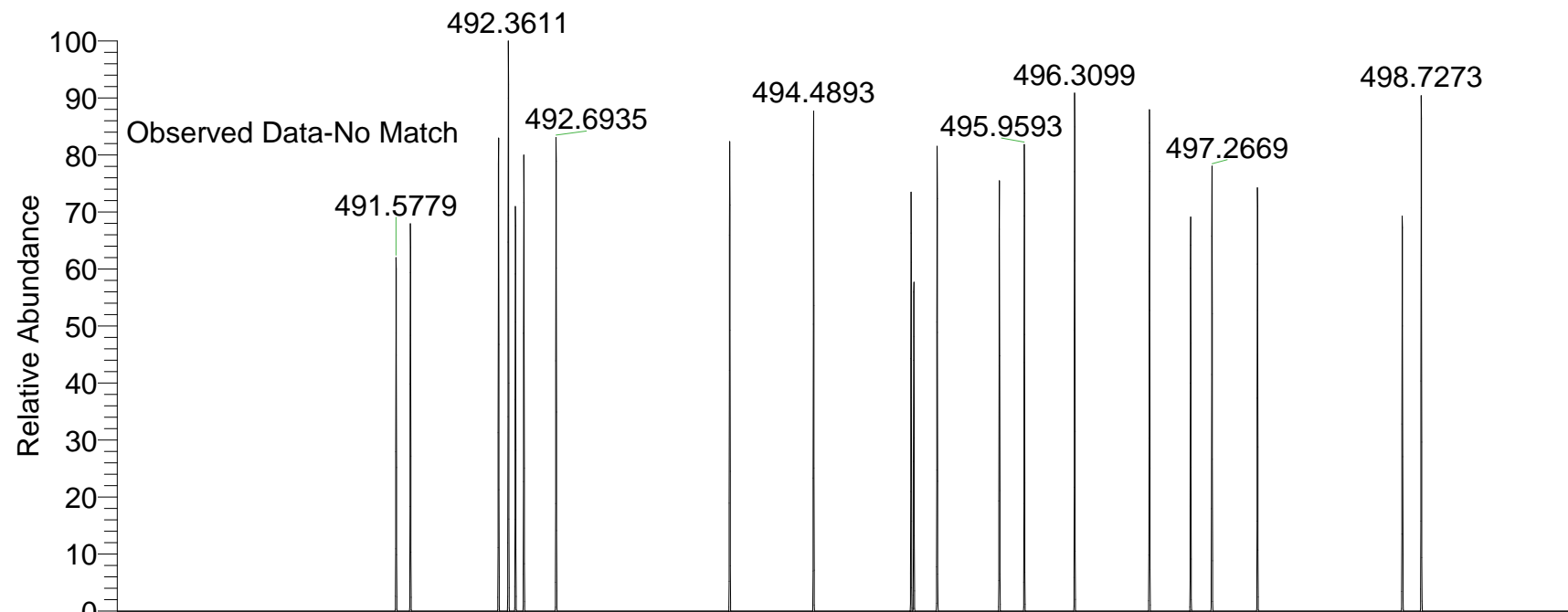


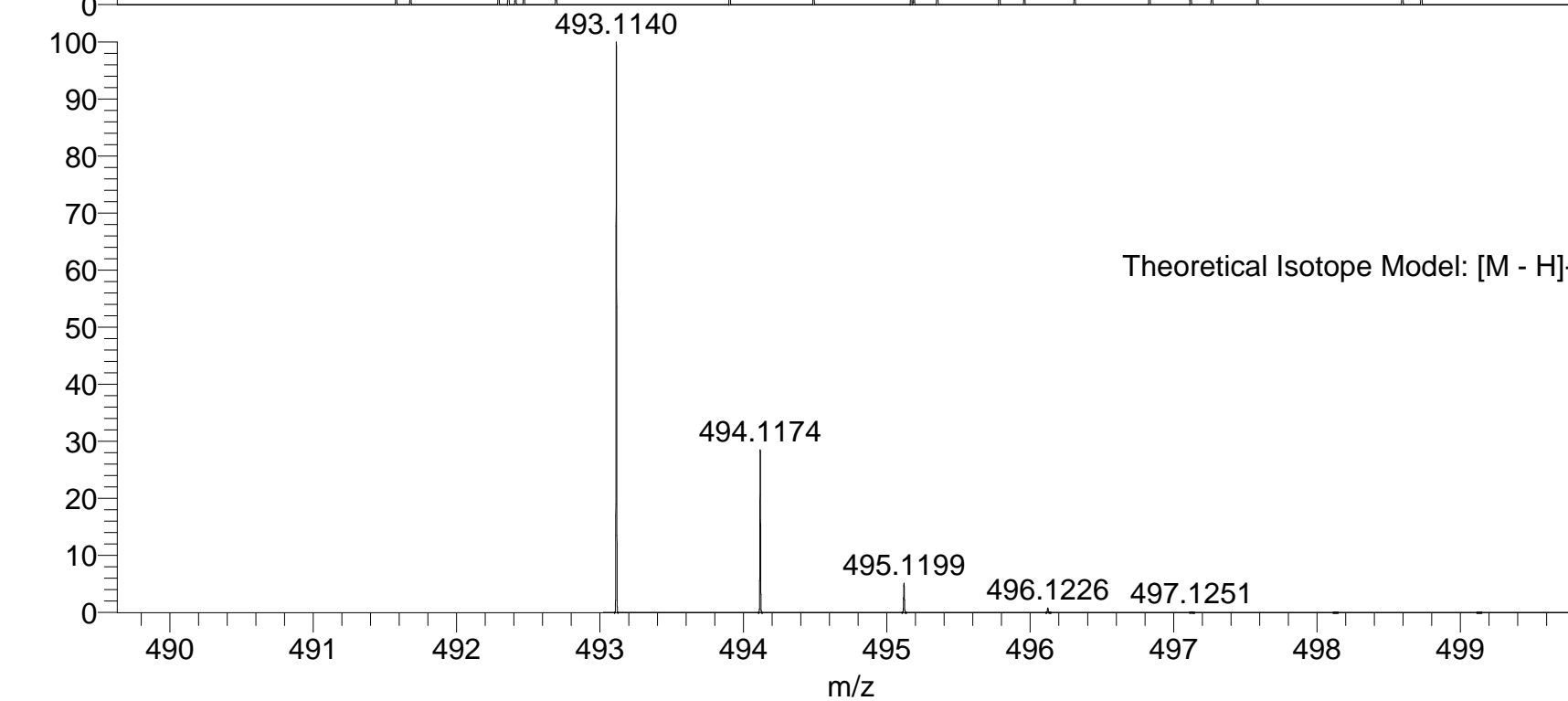
BATJAM_LVXAK_42903 #7-15 RT: 0.17-0.40 AV: 9 SM: 7G NL: 2.99E7
T: FTMS - p NSI Full ms [140.00-1935.00]



SM: 7G

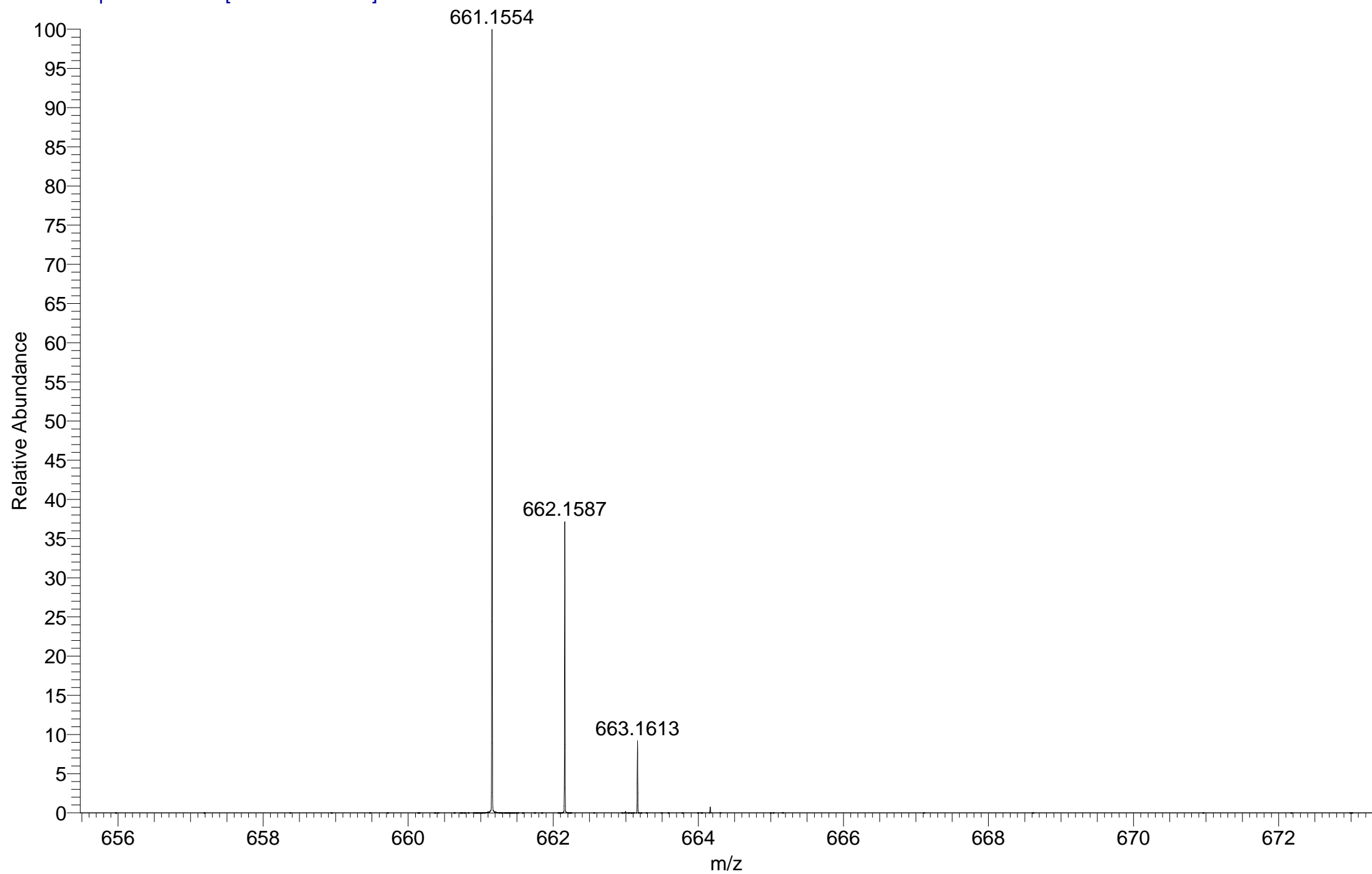


NL:
1.42E3
BATJAM_LVXAK_42903#7-15
RT: 0.17-0.40 AV: 9 T: FTMS -
p NSI Full ms [140.00-1935.00]



NL:
1.73E4
C₂₆H₂₁O₁₀:
C₂₆H₂₁O₁₀
p (gss, s /p:40) Chrg -1
R: 100000 Res .Pwr . @FWHM

BATJAM_LVXAK_42903 #7-15 RT: 0.17-0.40 AV: 9 SM: 7G NL: 2.99E7
T: FTMS - p NSI Full ms [140.00-1935.00]



Isotope: Min. .. Max.
 14 N 0....10
 16 O 0....15
 12 C 0....50
 1 H 0....50
 23 Na 0....0
 Tolerance Window: +- 5.00 ppm
 Db/Ring Equiv: -3.. 300
 Fits: 300

N-Rule: Do not use
 Charge: -1

Mass	Theoretical Mass	Delta [ppm]	RDB	Composition
661.1554	661.1558	-0.6	38.5	C ₄₇ H ₂₁ O ₃ N ₂
	661.1549	0.7	21.0	C ₃₂ H ₂₇ O ₁₃ N ₃
	661.1549	0.7	26.5	C ₃₁ H ₂₁ O ₈ N ₁₀
	661.1563	-1.3	26.0	C ₃₃ H ₂₃ O ₉ N ₇
	661.1563	-1.3	20.5	C ₃₄ H ₂₉ O ₁₄
	661.1544	1.5	39.0	C ₄₅ H ₁₉ O ₂ N ₅
	661.1536	2.7	21.5	C ₃₀ H ₂₅ O ₁₂ N ₆
	661.1576	-3.4	25.5	C ₃₅ H ₂₅ O ₁₀ N ₄
	661.1531	3.5	34.0	C ₄₄ H ₂₃ O ₆ N ₁
	661.1531	3.5	39.5	C ₄₃ H ₁₇ O ₁ N ₈
	661.1584	-4.6	43.0	C ₅₀ H ₁₉ N ₃
	661.1523	4.8	22.0	C ₂₈ H ₂₃ O ₁₁ N ₉